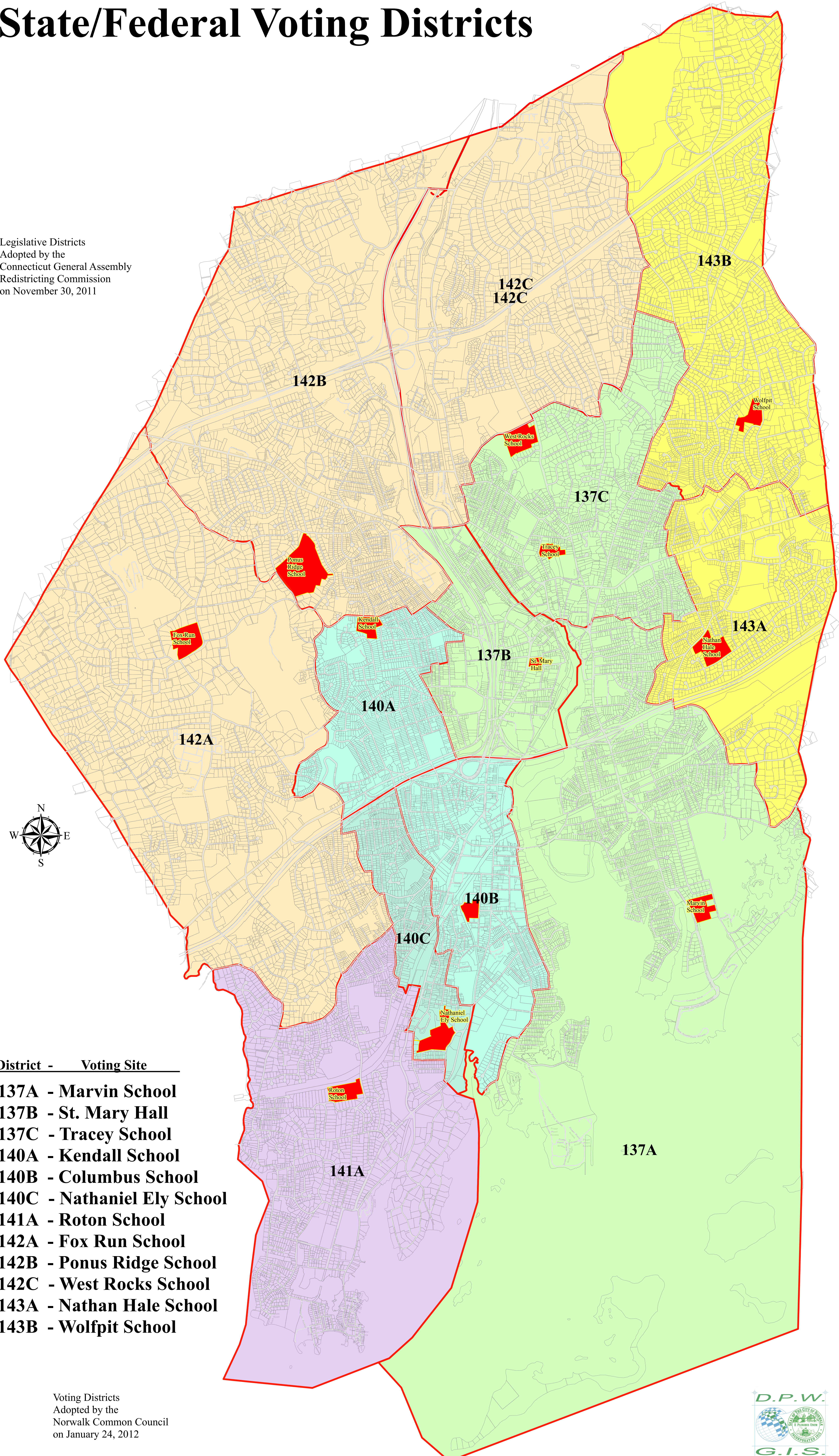


State/Federal Voting Districts

Legislative Districts
Adopted by the
Connecticut General Assembly
Redistricting Commission
on November 30, 2011



- | District | Voting Site |
|----------|----------------------|
| 137A | Marvin School |
| 137B | St. Mary Hall |
| 137C | Tracey School |
| 140A | Kendall School |
| 140B | Columbus School |
| 140C | Nathaniel Ely School |
| 141A | Roton School |
| 142A | Fox Run School |
| 142B | Ponus Ridge School |
| 142C | West Rocks School |
| 143A | Nathan Hale School |
| 143B | Wolfpit School |

Voting Districts
Adopted by the
Norwalk Common Council
on January 24, 2012

