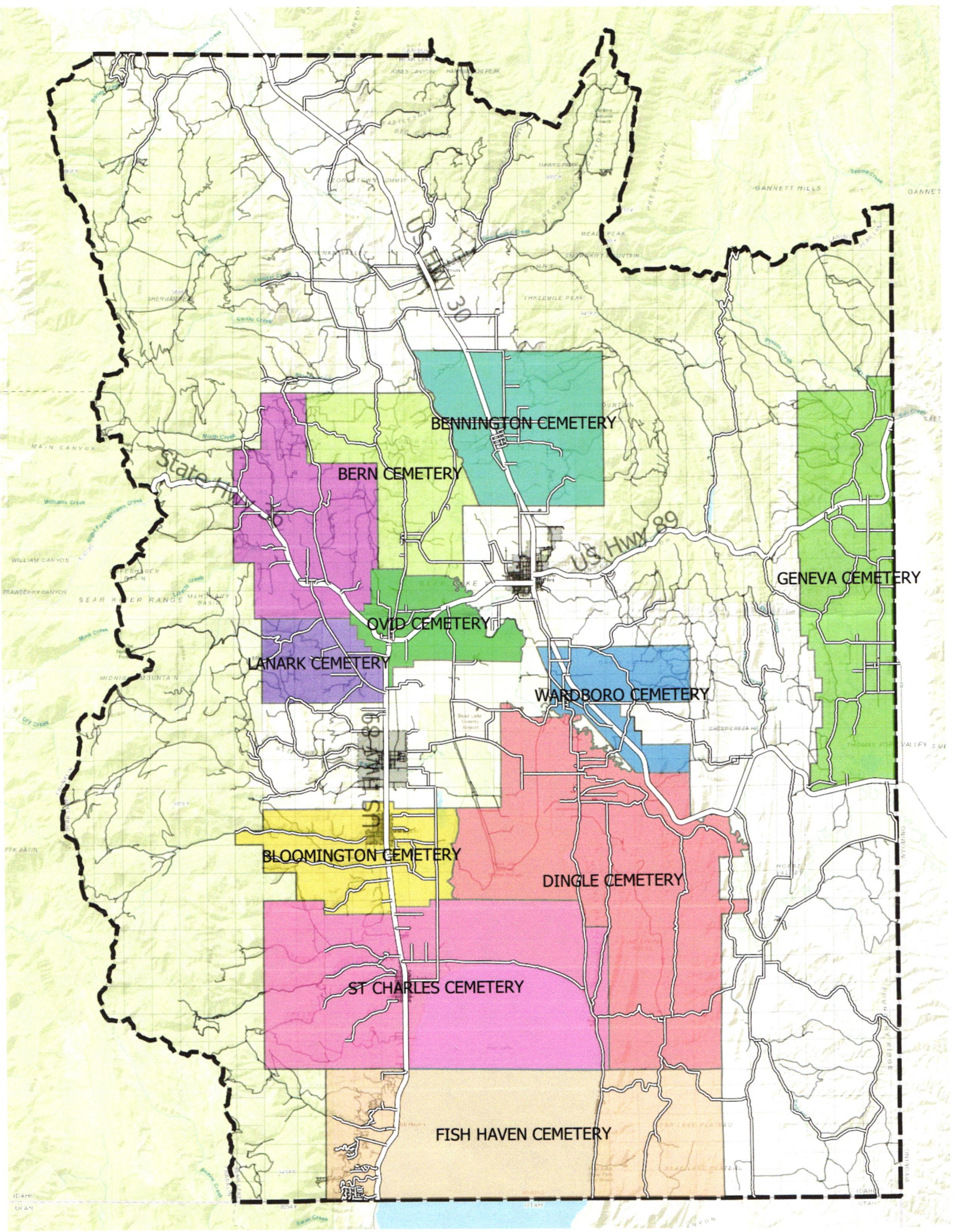


We have a total of 15 Precincts

- Montpelier 1, 2 and 3
- Bennington 5
- Bern 6
- Bloomington 7
- Dingle 8
- Fish Haven 9
- Geneva Program 10
- Georgetown 11
- Lanark/Ovid 17
- Paris 13
- St. Charles 15
- Bailey Creek 16
- Liberty 12





**BENNINGTON CEMETERY**

**BERN CEMETERY**

**GENEVA CEMETERY**

**OVID CEMETERY**

**LANARK CEMETERY**

**WARDBORO CEMETERY**

**BLOOMINGTON CEMETERY**

**DINGLE CEMETERY**

**ST CHARLES CEMETERY**

**FISH HAVEN CEMETERY**

State Hwy 30

US Hwy 89

US Hwy 89

WYOMING

UTAH



Ruth R. Taylor

being first duly sworn, deposes and says she is Publisher and Foreman of the News-Examiner; that the said News-Examiner is a weekly newspaper published at Montpelier, County of Bear Lake, State of Idaho, of general circulation in said County and State.

That the notice attached was published in the said News-Examiner, and not in a supplement, for three successive weeks, commencing with the issue dated June 18, 1964 and ending with the issue dated July 2, 1964

*Ruth R. Taylor*

Publisher and Foreman.

Subscribed and sworn to before me this 13th

1964

ry Public.

NOTICE OF HEARING ON THE  
CREATION OF THE OVID  
CEMETERY MAINTENANCE  
DISTRICT, BEAR LAKE COUNTY  
STATE OF IDAHO

Notice is hereby given that a petition has been presented to the Board of County Commissioners and filed in the office of the Clerk thereof for the creation of a Cemetery Maintenance District to be called the Ovid Cemetery Maintenance District. That the proposed boundaries of said district are as follows: Description for the Proposed Ovid Cemetery District (Old School District No. 6)

Commencing at a point in the center of "Bear River," which said point is a point where the said river intersects the center line of Section 6 (In the North line of the NW 1/4 of the SE 1/4 of Section 6), Township 13 South, Range 44 East, Boise Meridian in Idaho; running thence West approximately 1 and 3/4 miles, more or less, to the West quarter corner of Section 1, Township 13 South, Range 43 East, Boise Meridian in Idaho; thence North 1/4 of a mile, more or less, to the NE corner of the SE 1/4 NE 1/4 of Section 2, Township 13 South, Range 43 East, Boise Meridian, in Idaho; thence West 1 and 1/4 miles, more or less, to the NW corner of the SE 1/4 NE 1/4 of Section 3, Township 13 South, Range 43 East, Boise Meridian in Idaho; thence South 1 and 1/4 miles, more or less, to the NW corner of the NE 1/4 SE 1/4 of Section 10, Township 13 South, Range 43 East, Boise Meridian in Idaho; thence West 1/4 of a mile, more or less, to the center of said section 10; thence South 1/4 of a mile, more or less, to the NW corner of the SW 1/4 SE 1/4 of said Section 10; thence West 1/2 mile, more or less, to the NW corner of the SW 1/4 of said Section 10; thence South 1/2 mile, more or less, to the SW corner of the NW 1/4 NW 1/4 of Section 15, Township 13 South, Range 43 East, Boise Meridian in Idaho; thence East 1/4 of a mile, more or less, to the NW corner of the SE 1/4 NW 1/4 of said Section 15; thence South 1/2 mile, more or less, to the SW corner of the NE 1/4 SW 1/4 of said Section 15; thence East 1/4 of a mile, more or less, to the NW corner of the SW 1/4 SE 1/4 of said Section 15; thence South 1/2 mile, more or less, to the South quarter corner of said Section 15; thence East 1/4 of a mile, more or less, to the SE corner of the SW 1/4 SE 1/4 of said Section 15; thence South 1/4 of a mile, more or less, to the SW corner of the NE 1/4 NE 1/4 of Section 22, Township 13 South, Range 43 East, Boise Meridian in Idaho; thence East 1/4 of a mile, more or less, to the SE corner of the NE 1/4 NE 1/4 of said Section 22; thence South 1/4 of a mile, more or less, to the East quarter corner of said Section 22; thence East 1/4 of a mile, more or less, to the NW corner of the NE 1/4 SW 1/4 of Section 23, Township 13 South, Range 43 East, Boise Meridian in Idaho; thence South 1 mile, more or less, to the SW corner of the SE 1/4 NW 1/4 of Section 26, Township 13 South, Range 43 East, Boise Meridian in Idaho; thence East 1/2 of a mile, more or less, to the SE corner of the SW 1/4 NE 1/4 of said Section 26; thence North 3/4 of a mile, more or less, to the SW corner of the NE 1/4 SE 1/4 of Section 23, Township 13 South, Range 43 East, Boise Meridian in Idaho; thence East 3/4 of a mile, more or less, to the SE corner of the NE 1/4 SW 1/4 of Section 24, Township 13 South, Range 43 East, Boise Meridian in Idaho; thence North 1/2 of a mile, more or less, to the NE corner of the SE 1/4 NW 1/4 of Section 24, Township 13 South, Range 43 East, Boise Meridian in Idaho; thence East 3 and 3/4 miles, more or less, to a point in the center of "Bear River" (which said point is where the South line of the NW 1/4 of the NW 1/4 of Section 22, Township 13 South, Range 44 East, Boise Meridian in Idaho intersects said river); thence following the windings and channel down said river in a Northerly and Westerly direction to the place of beginning.

Notice is further given that hearing of protest to the organization and creation of said proposed cemetery maintenance district shall be held on the 13th day of July, 1964, at which time any taxpayer within the proposed boundaries of such proposed district may appear at such hearing and offer any objection of the organization of such district, the proposed boundaries thereof, or the including or excluding of any real property therein or therefrom.

BOARD OF  
COUNTY COMMISSIONERS