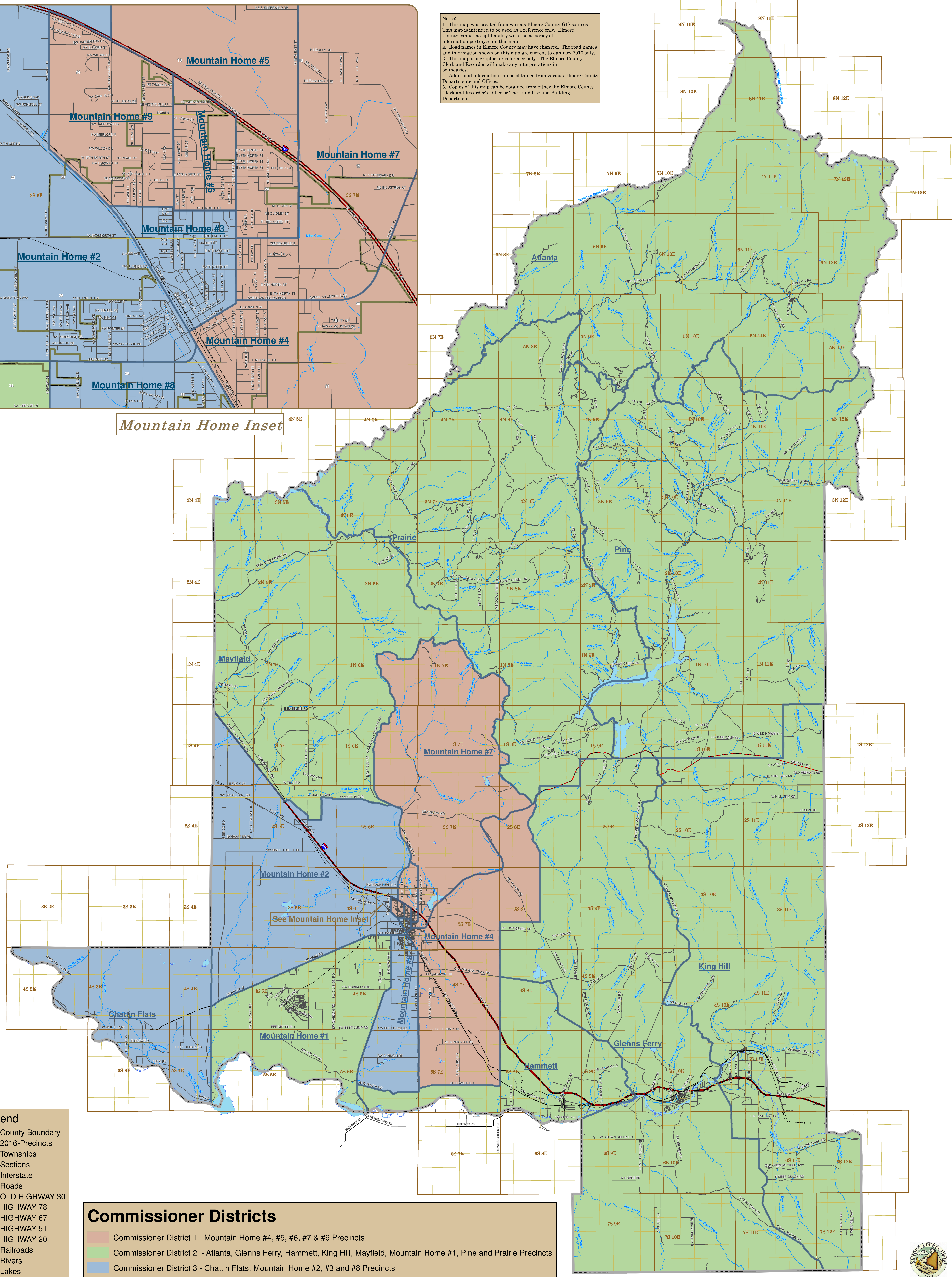


*Mountain Home Inset*

Notes:  
 1. This map was created from various Elmore County GIS sources. This map is intended to be used as a reference only. Elmore County cannot accept liability with the accuracy of information portrayed on this map.  
 2. Road names in Elmore County may have changed. The road names and information shown on this map are current to January 2016 only.  
 3. This map is a graphic for reference only. The Elmore County Clerk and Recorder will make any interpretations in boundaries.  
 4. Additional information can be obtained from various Elmore County Departments and Offices.  
 5. Copies of this map can be obtained from either the Elmore County Clerk and Recorder's Office or The Land Use and Building Department.



- Legend**
- County Boundary
  - 2016-Precincts
  - Townships
  - Sections
  - Interstate
  - Roads
  - OLD HIGHWAY 30
  - HIGHWAY 78
  - HIGHWAY 67
  - HIGHWAY 51
  - HIGHWAY 20
  - Railroads
  - Rivers
  - Lakes

- Commissioner Districts**
- Commissioner District 1 - Mountain Home #4, #5, #6, #7 & #9 Precincts
  - Commissioner District 2 - Atlanta, Glens Ferry, Hammett, King Hill, Mayfield, Mountain Home #1, Pine and Prairie Precincts
  - Commissioner District 3 - Chattin Flats, Mountain Home #2, #3 and #8 Precincts

