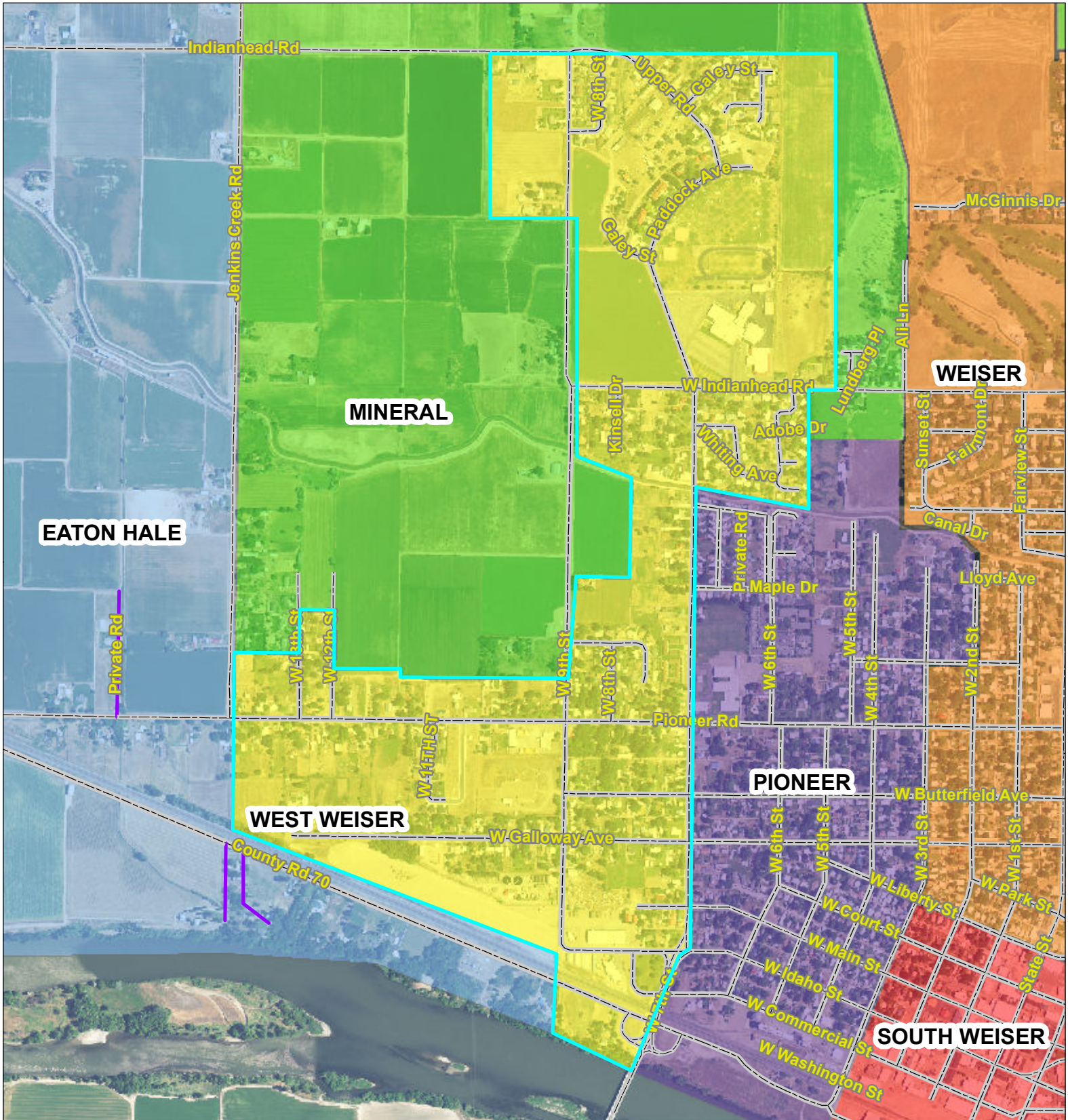




THIS MAP CREATED BY THE OFFICE OF THE
WASHINGTON COUNTY ASSESSOR



BASED ON GOVERNMENT SURVEYS & OFFICIAL RECORDS
ON FILE AT THE OFFICE OF THE COUNTY RECORDER OF
WASHINGTON COUNTY, IDAHO.
FOR ASSESSMENT PURPOSES ONLY
DOES NOT GUARANTEE BOUNDARIES

0 0.15 0.3 Miles 1 inch = 1,030.9 feet

- TOWNSHIP LINES**
- SECTION LINES**
- 1/4 SECTION LINES**
- RIVERS**

- ROADS - ALL**
- U S OR STATE HWY
- PAVED
- PAVED
- GRAVEL OR DIRT

- DIRT OR GRAVEL
- CITY STREETS
- NATIONAL FOREST
- PRIVATE