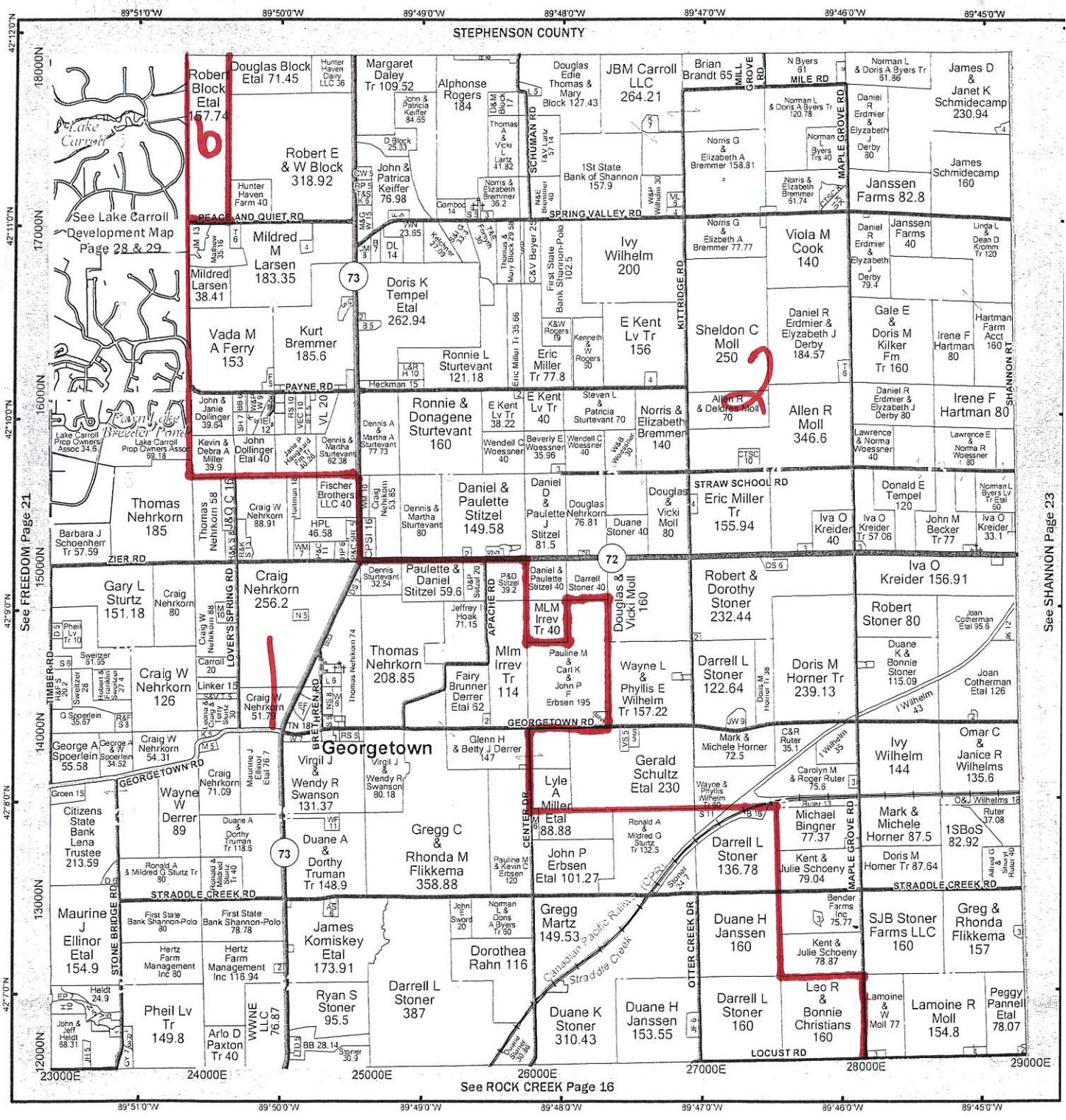


# CHERRY GROVE/ Shannon 1 0101

T.25N. - R.6E. 

Copyright © 2011 Carroll County



010101  
010102  
010106

See SHANNON Page 23

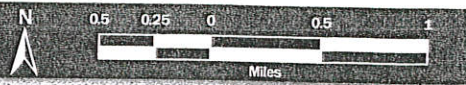
See FREEDOM Page 21

See ROCK CREEK Page 16

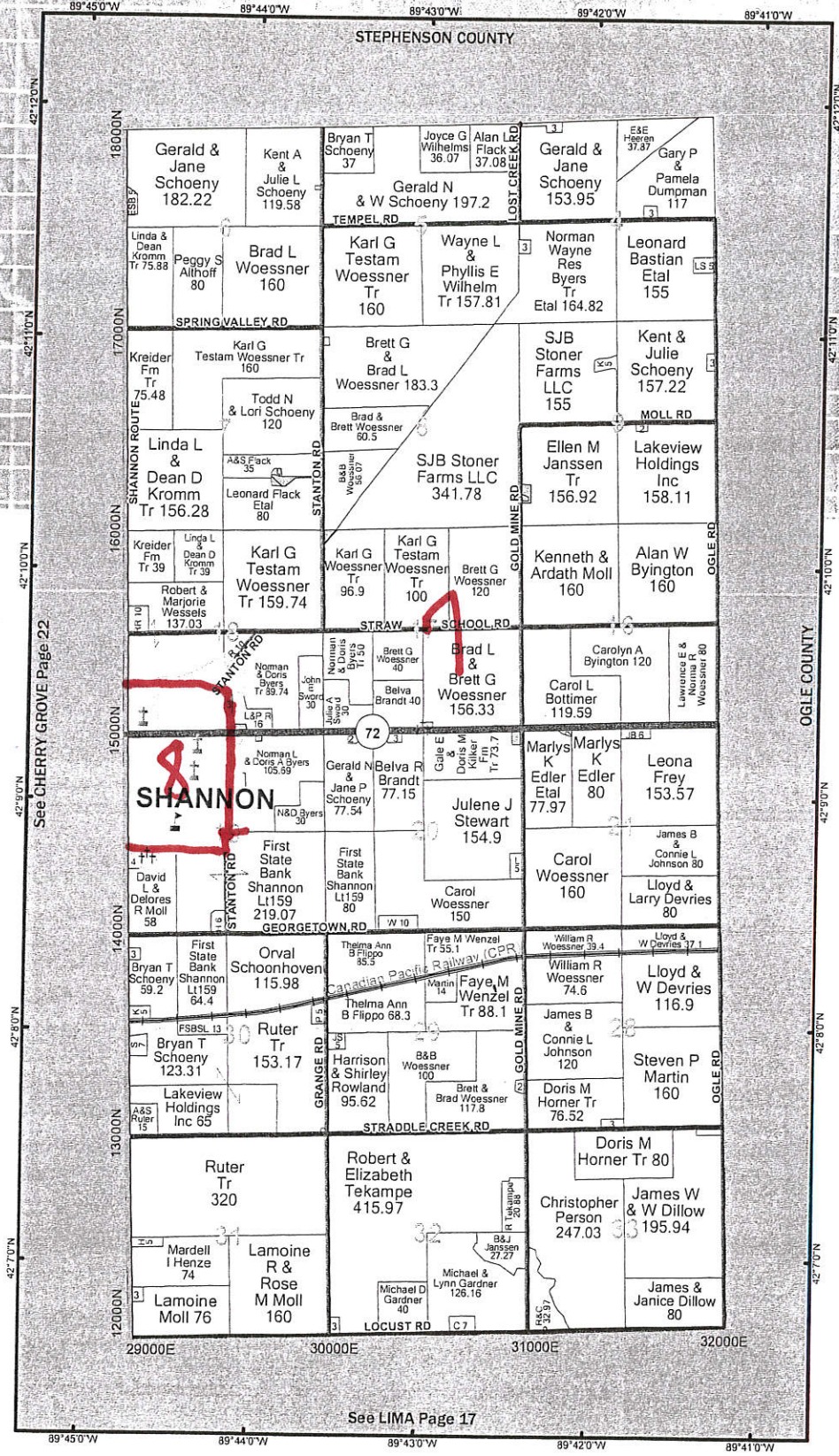
Carroll  
Shannon  
Cherry Grove

SHANNON 2  
0102

T.25N. - R.7E.



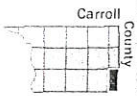
Copyright © 2011 Carroll County



See CHERRY GROVE Page 22

See LIMA Page 17

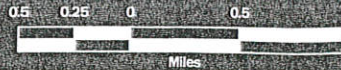
010207  
010208



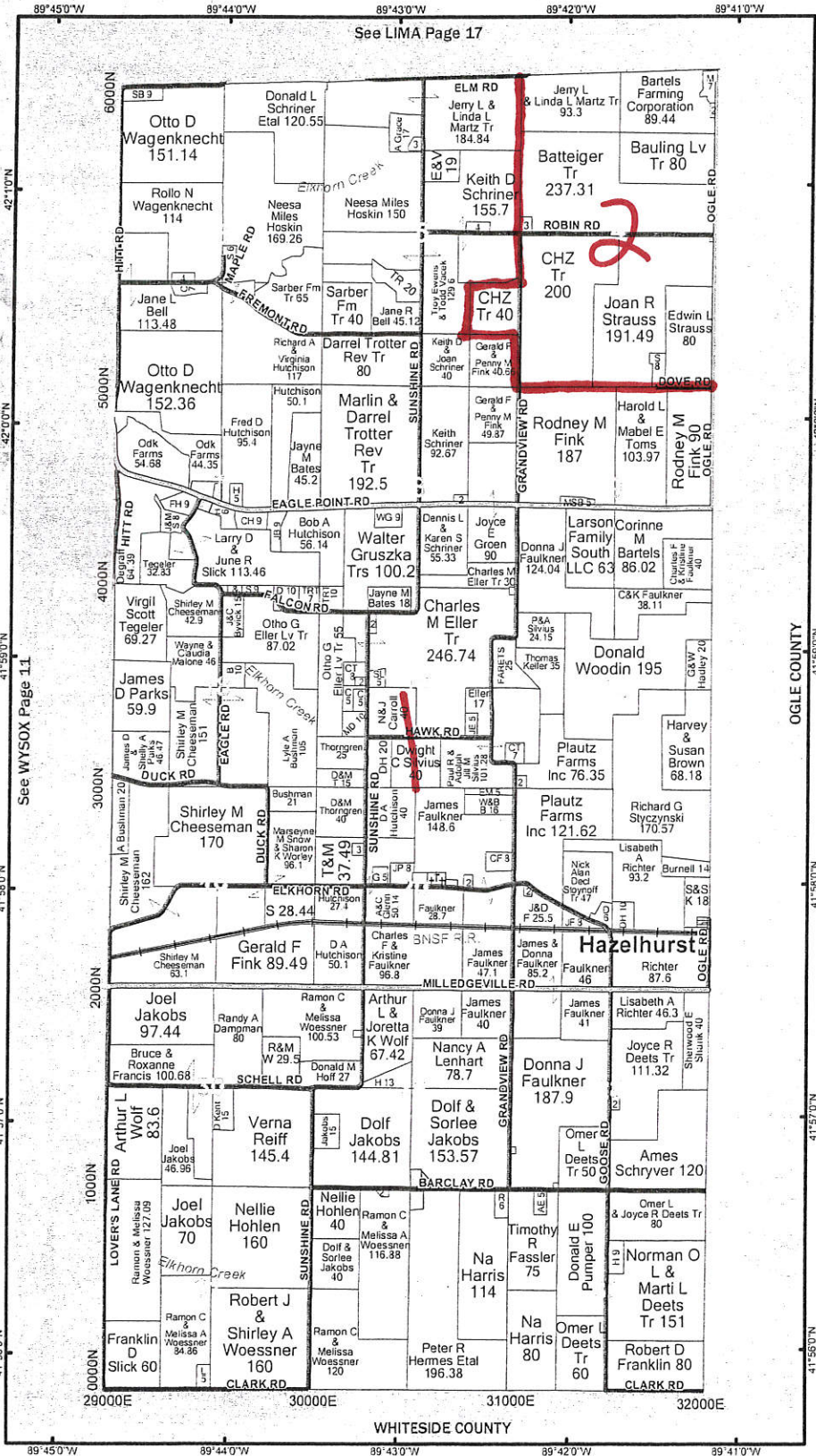
# ELKHORN GROVE

0201

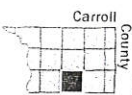
T.23N. - R.7E.



Copyright © 2011 Carroll County

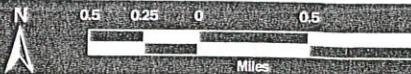


020101  
020202

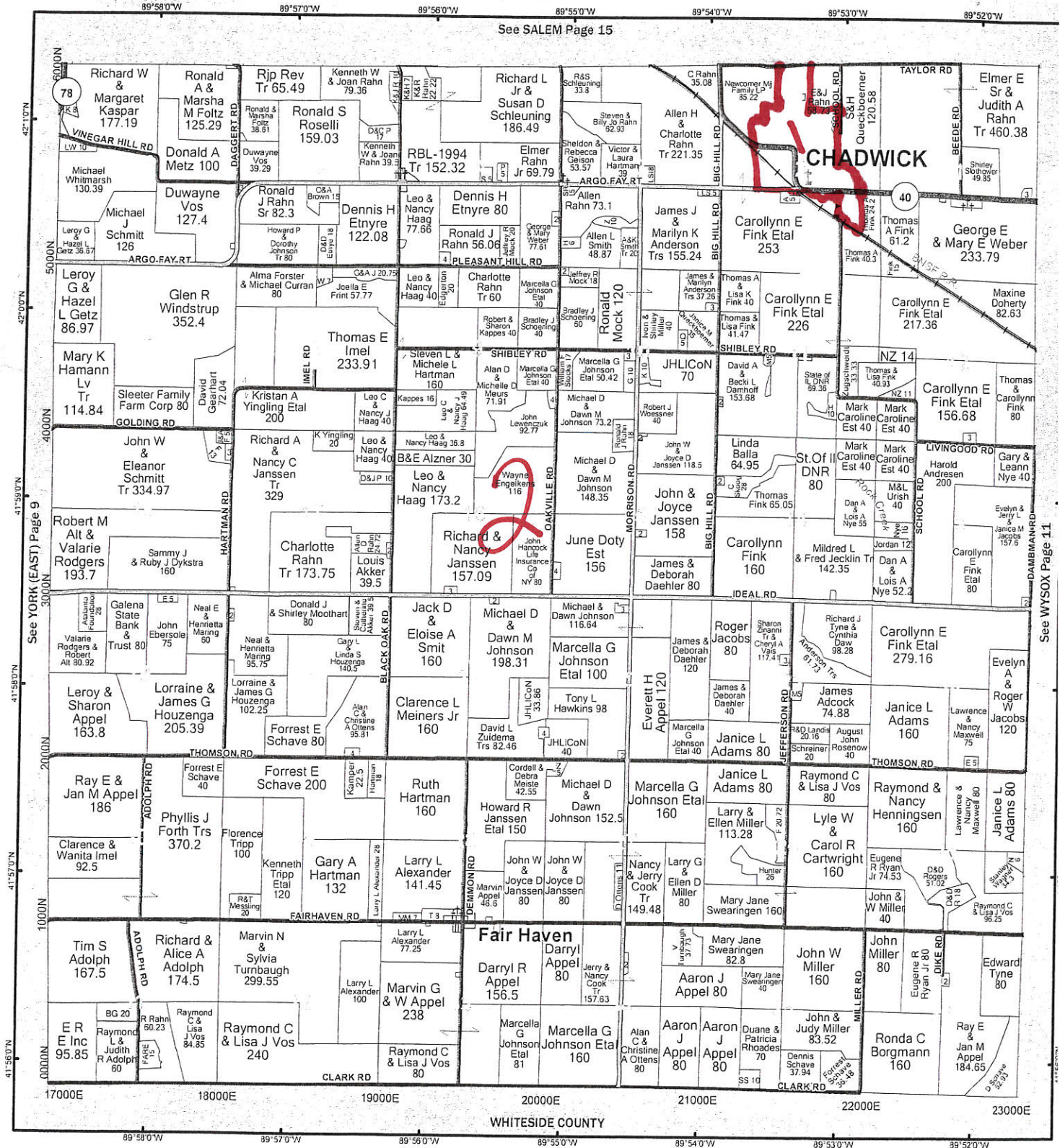


# FAIRHAVEN 0301

T.23N. - R.5E.



Copyright © 2011 Carroll County



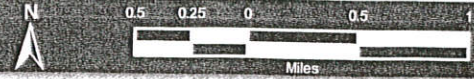
030101  
030102



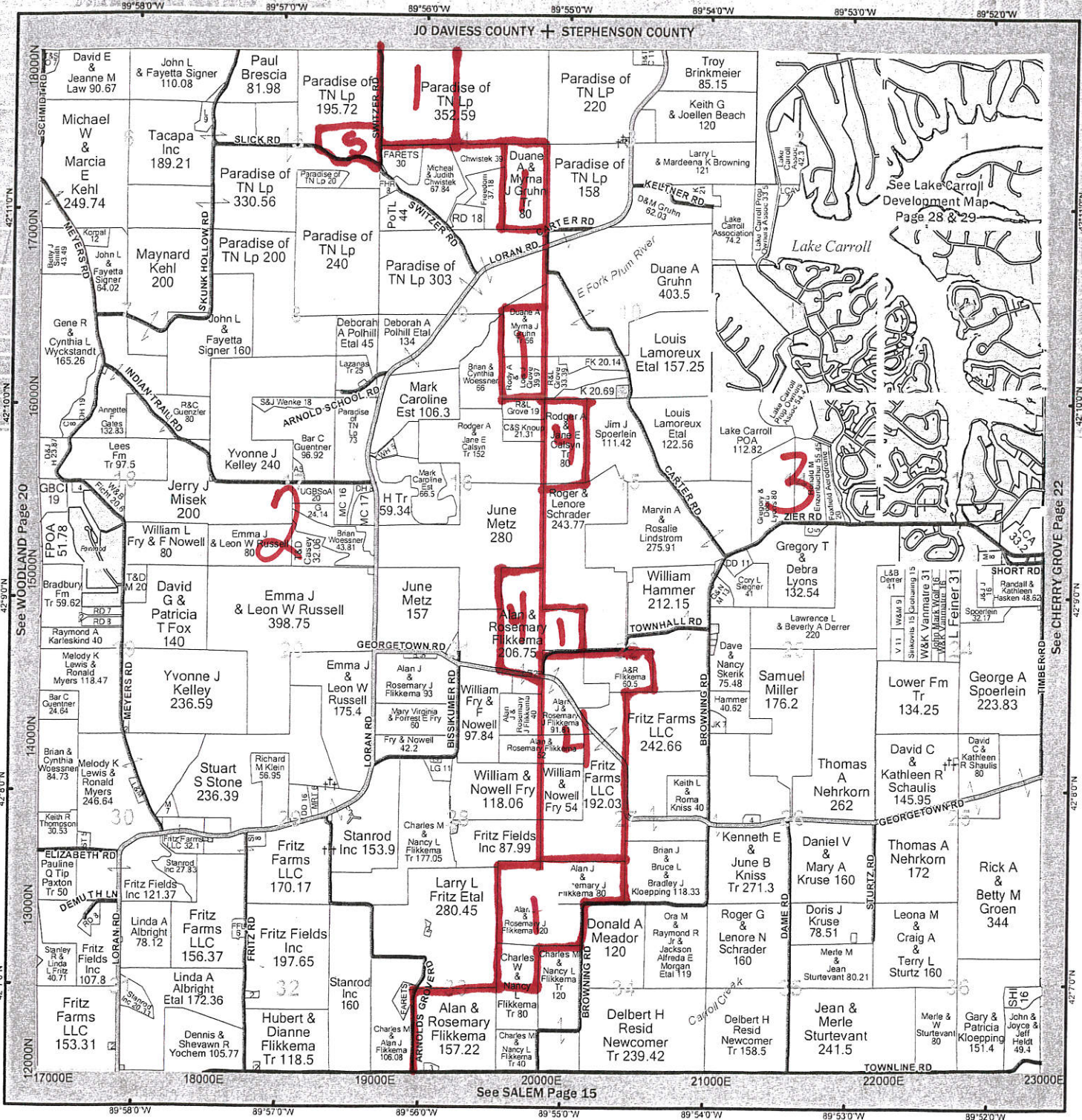
# FREEDOM

# 0401

## T.25N. - R.5E.

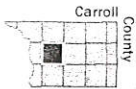


Copyright © 2011 Carroll County



040101  
040102  
040103

040104  
040105



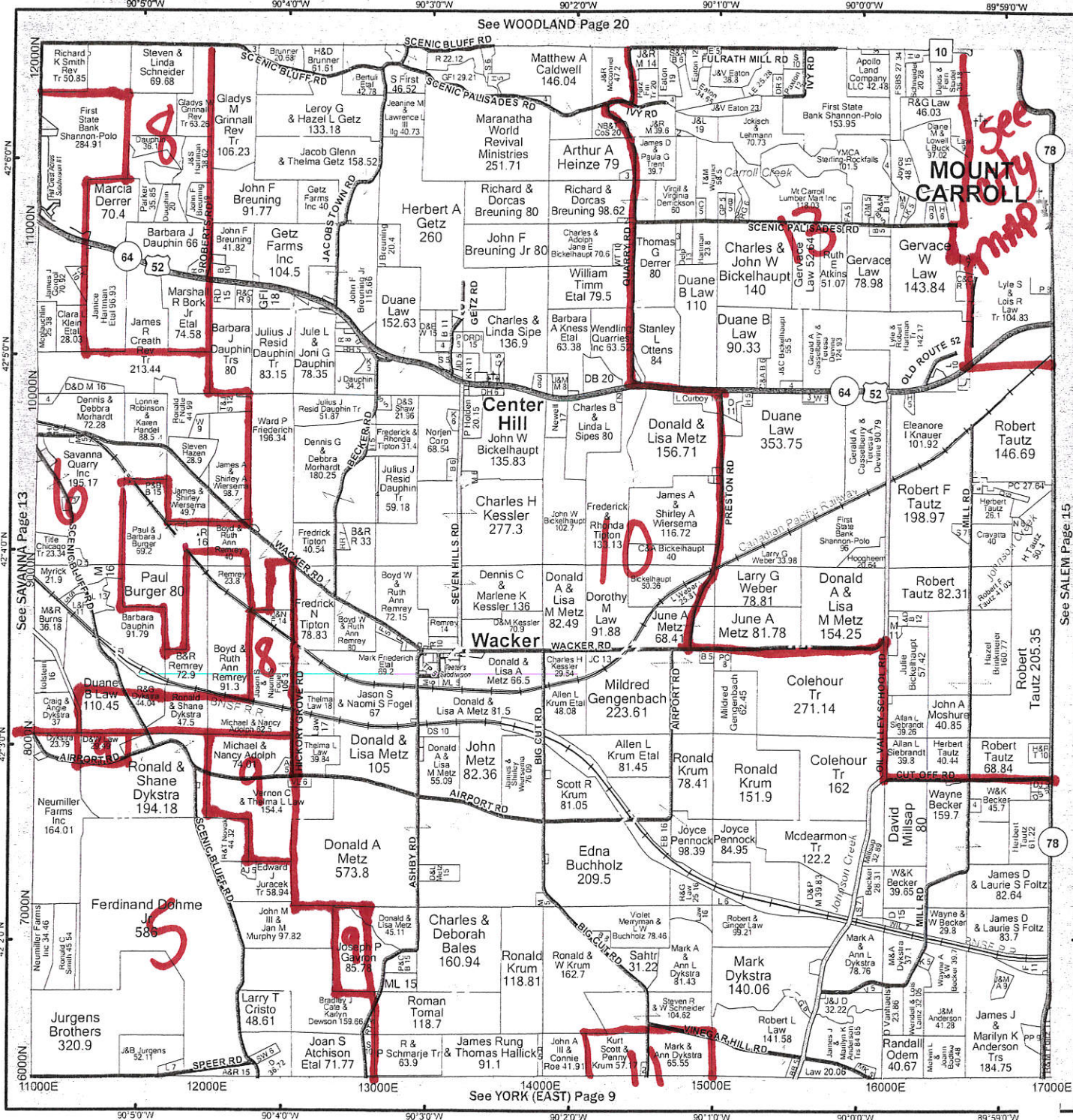
# MOUNT CARROLL 2

T.24N. - R.4E.



Copyright © 2011 Carroll County

0602



See CARROLL  
MOUNT  
CARROLL  
MAP

See SAVANNA Page 13

See YORK (EAST) Page 9

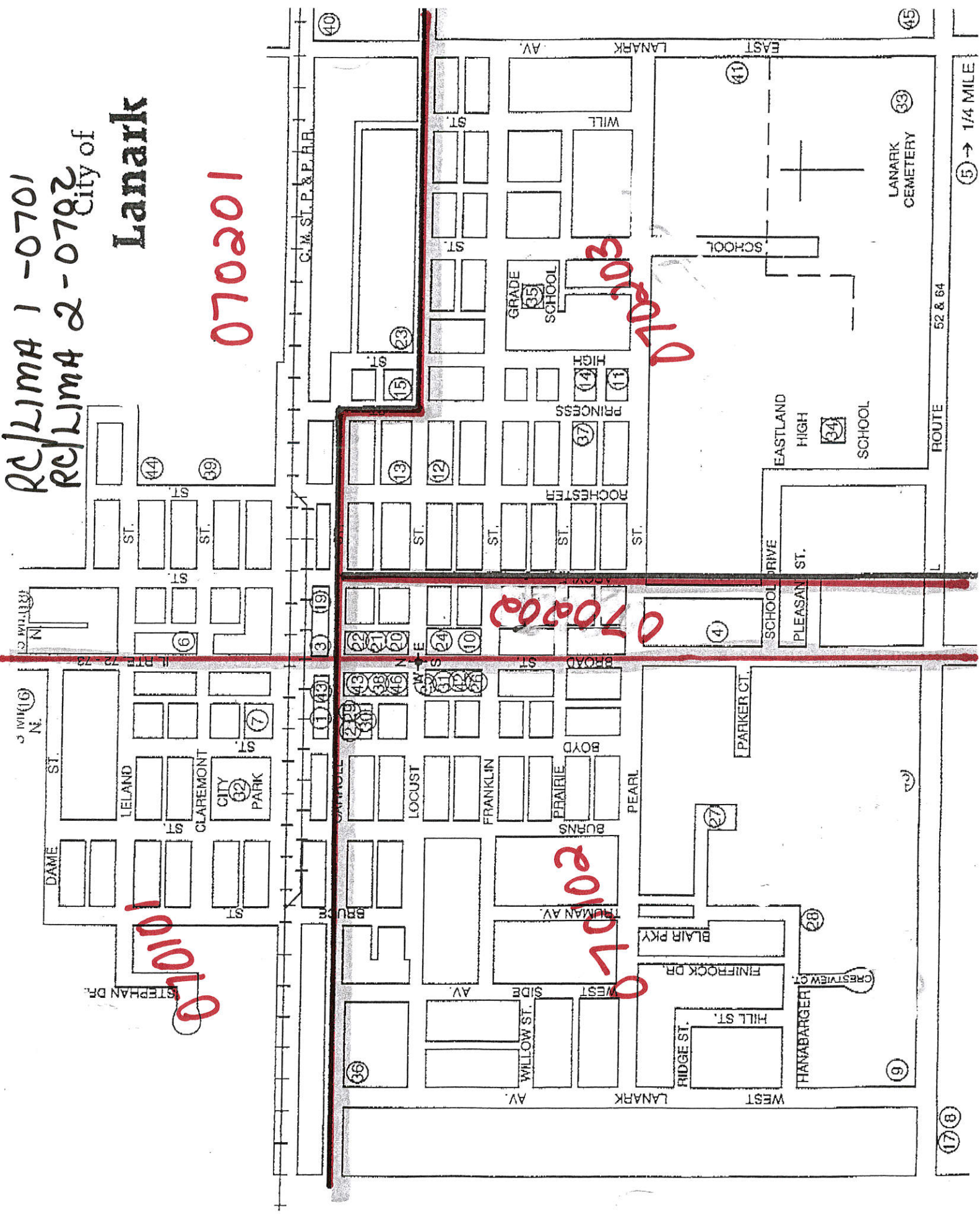
See SALEM Page 15

- 060205
- 060206
- 060208
- 060209
- 060210
- 060211
- 060213

RE/LIMA 1 -0701  
RE/LIMA 2 -0782

# City of Lanark

070201



5 → 1/4 MILE

ROUTE 52 & 64

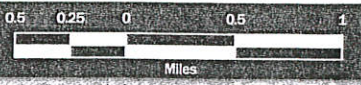
17 B

ROCK Creek

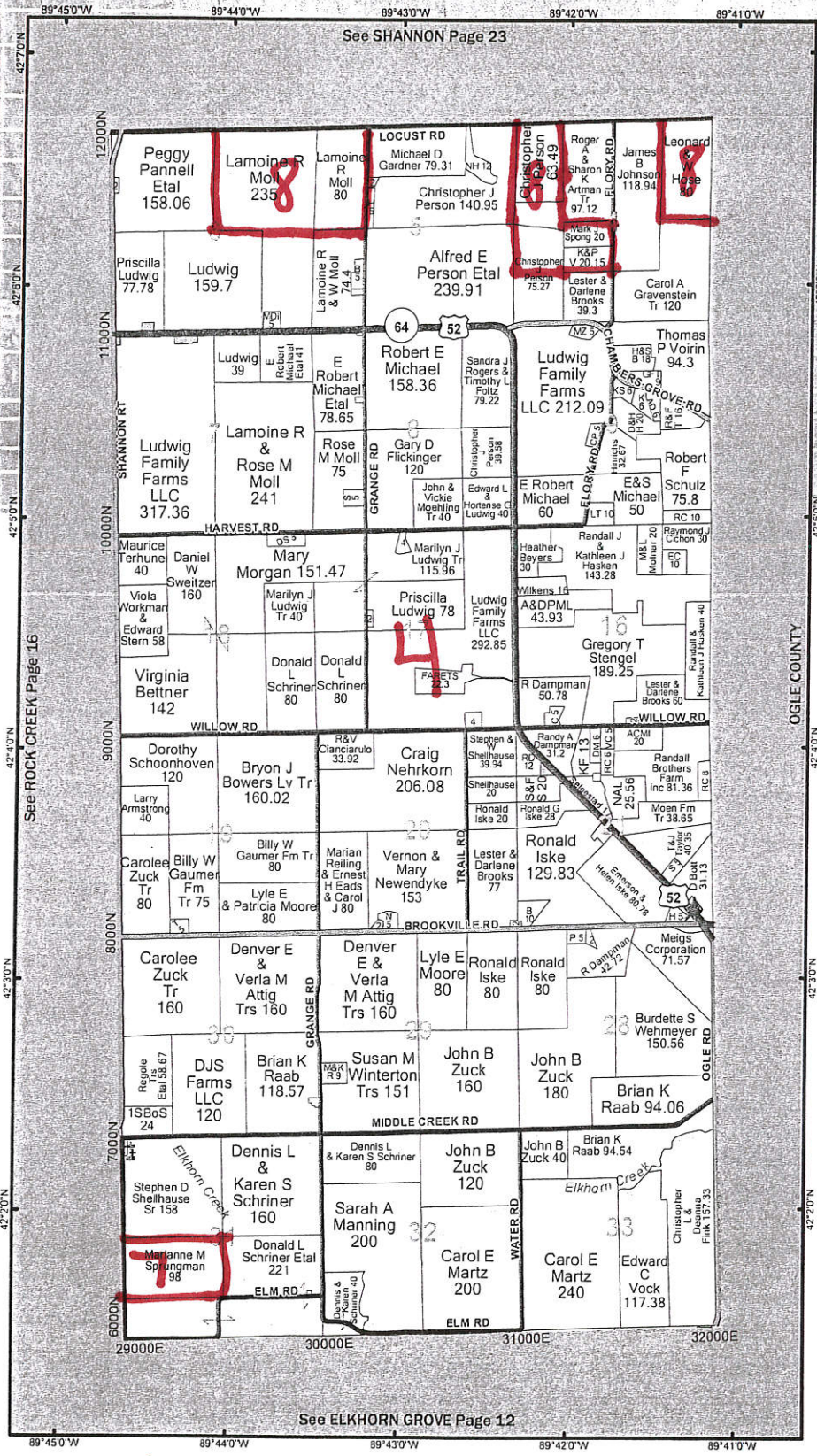
LIMA 2

0702

T.24N. - R.7E



Copyright © 2011 Carroll County



070204  
070207  
070208

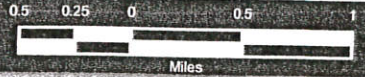


Carroll  
Aunoc

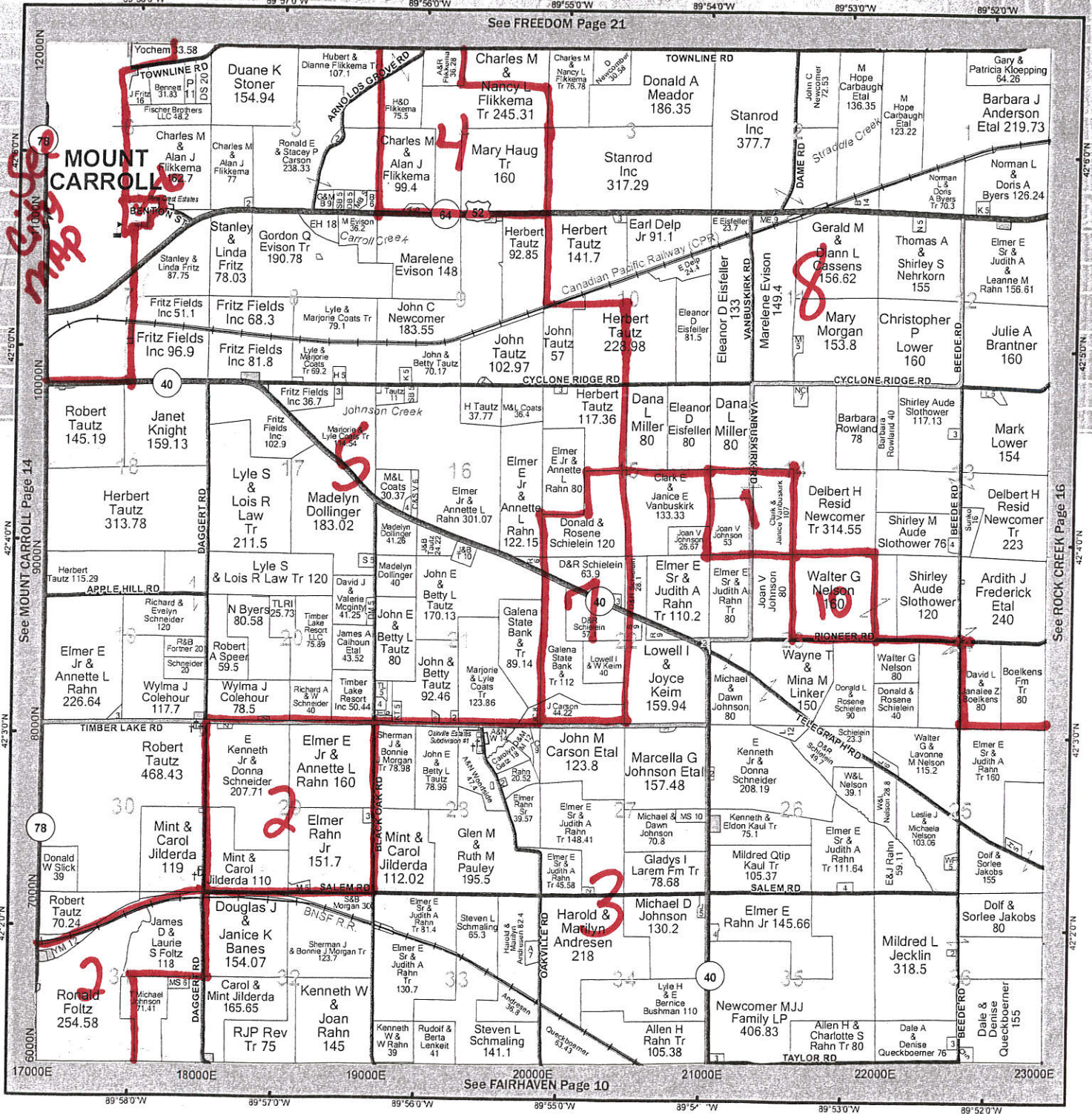
# SALEM

D801

T.24N. - R.5E.



Copyright © 2011 Carroll County



080101  
080102  
080103  
080104

080105  
080106  
080107  
080108

080110

Mt. Carroll 1-0601  
Mt. Carroll 2-0602  
Mt. Carroll 3-0603

Hand  
written  
Cent.

060102

060101

060101

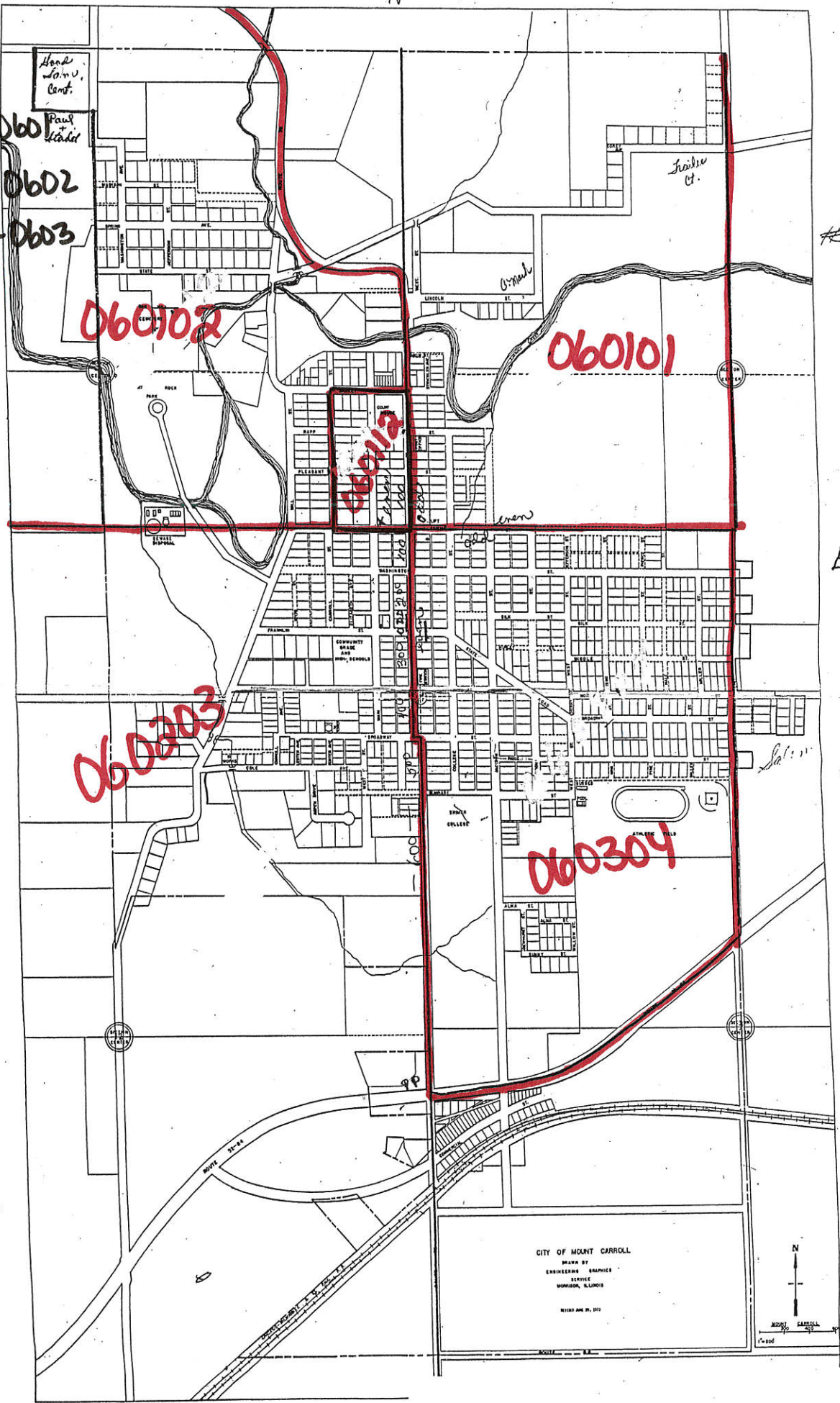
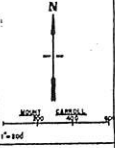
060303

060304

W

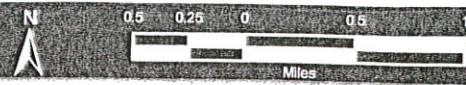
E

CITY OF MOUNT CARROLL  
DRAWN BY  
ENGINEERING SERVICE  
WORTHINGTON, ILLINOIS  
MAY 20, 1911



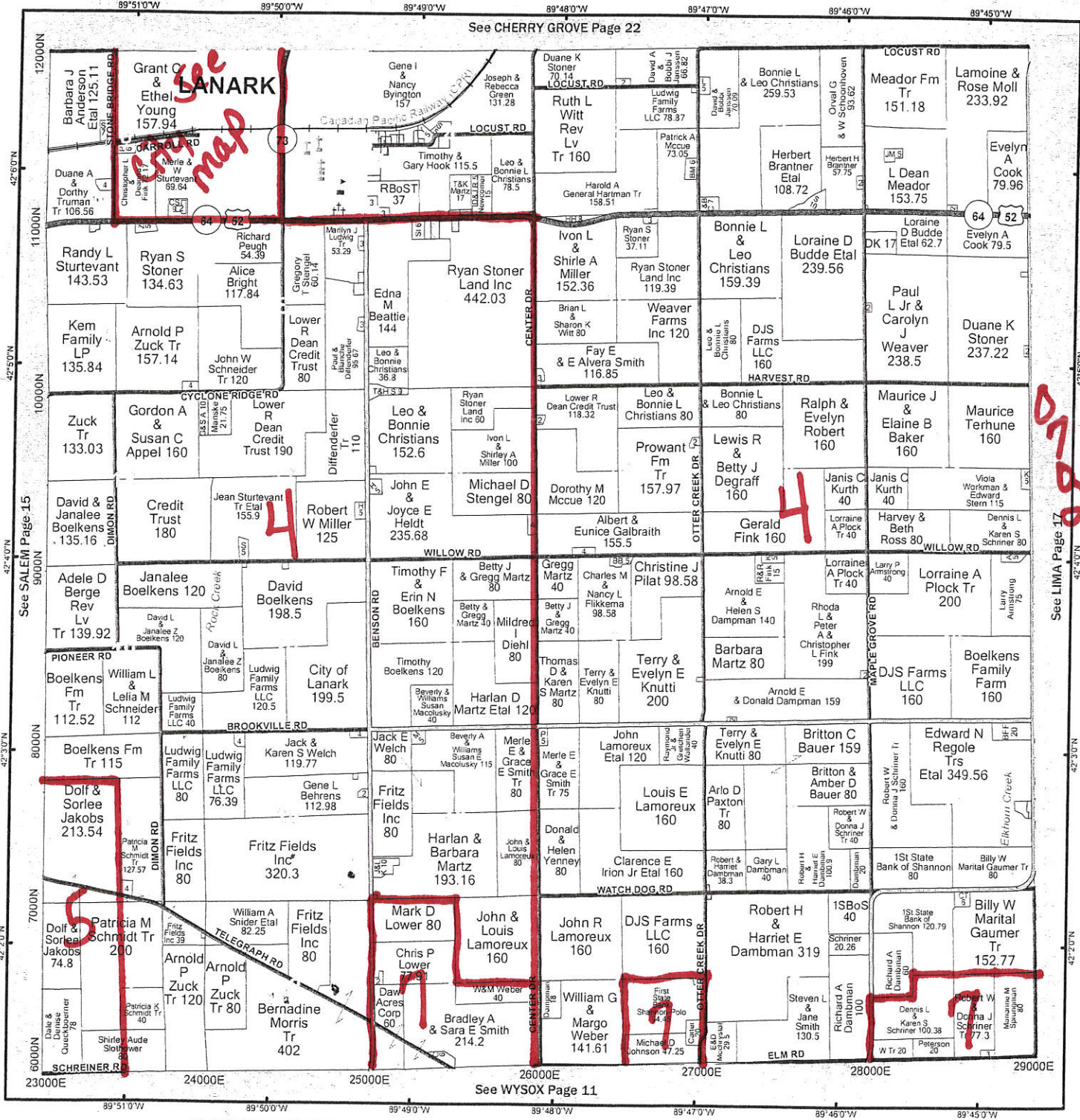
# ROCK CREEK/LIMA 1 ROCK CREEK/LIMA 2

T.24N. - R.6E



Copyright © 2011 Carroll County

0701 + 0702



0701

0702

070104  
070105  
070107

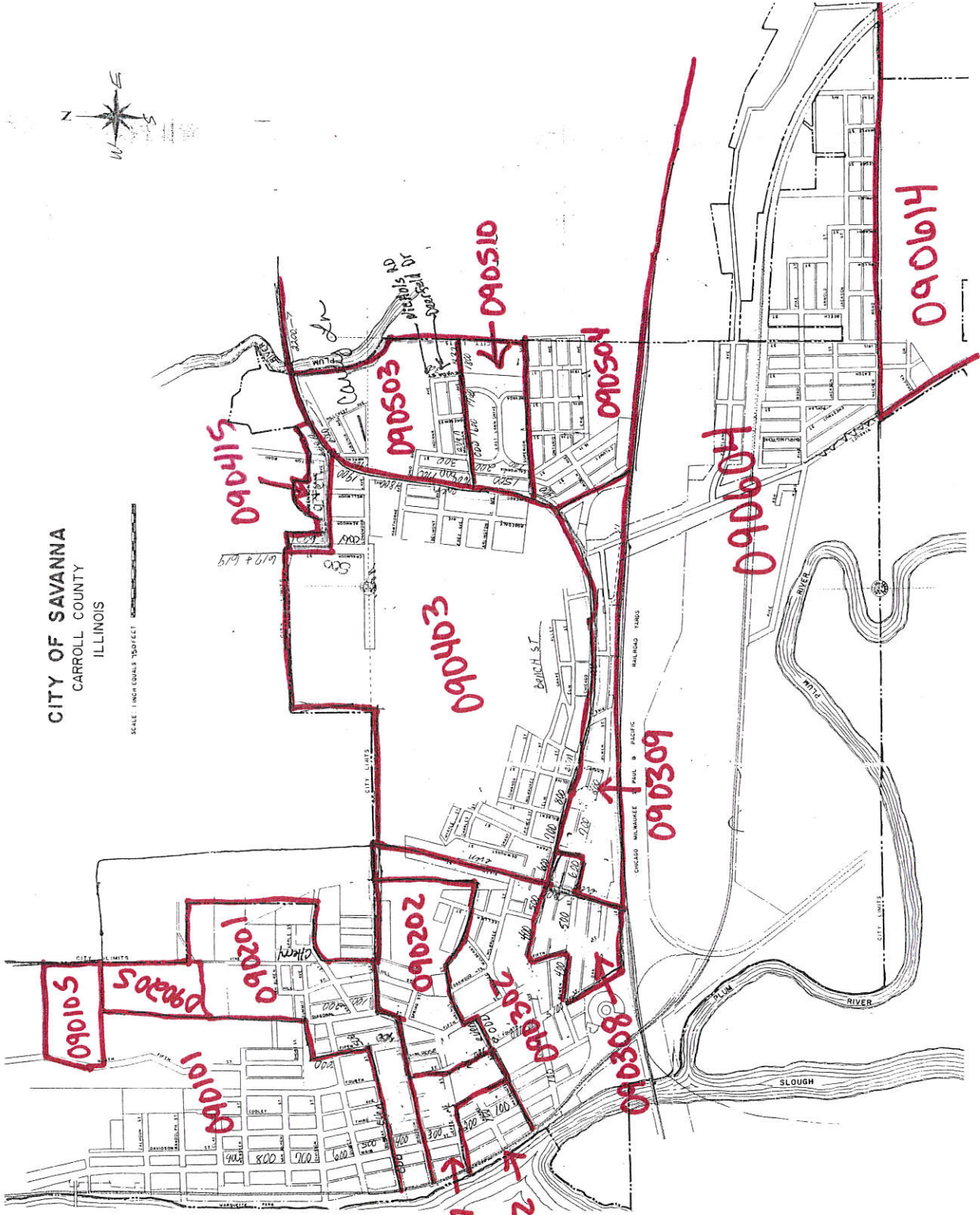
070204  
070207



- Savanna 1 - 0901
- Savanna 2 - 0902
- Savanna 3 - 0903
- Savanna 4 - 0904
- Savanna 5 - 0905
- Savanna 6 - 0906

CITY OF SAVANNA  
 CARROLL COUNTY  
 ILLINOIS

SCALE: 1" = 100 FEET



090207  
 090206

090101  
 090205  
 090105

090202

090302  
 090308

090309

090415

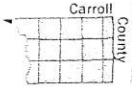
090503

090510

090504

090604

090614



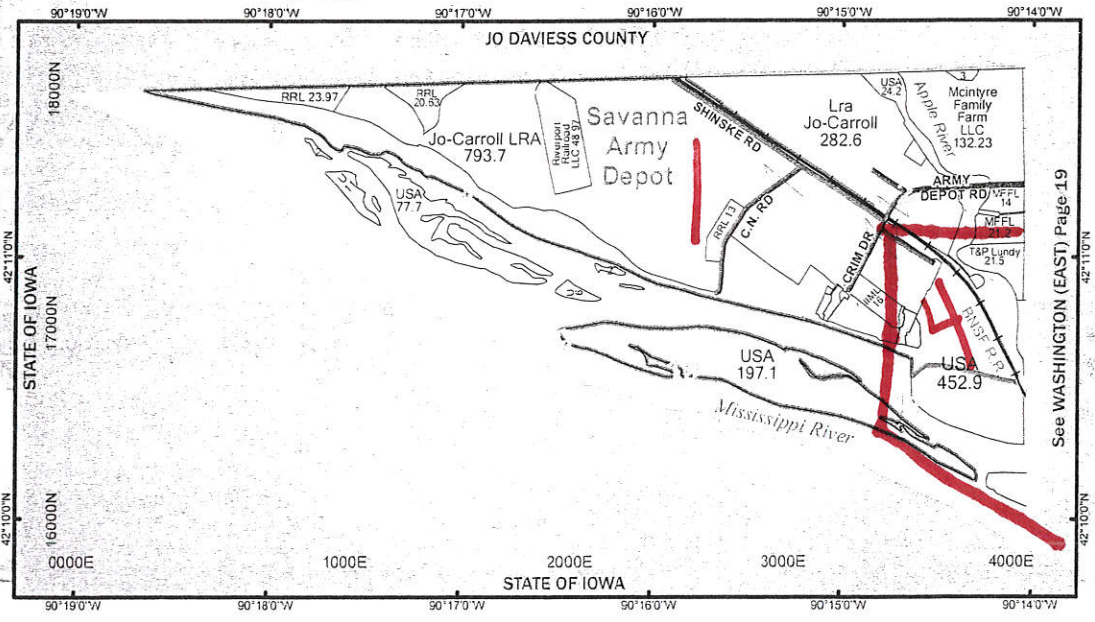
# WASHINGTON (WEST)

1101

T.25N. - R.2E.

Miles

Copyright © 2011 Carroll County

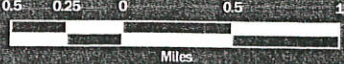


110101  
110104

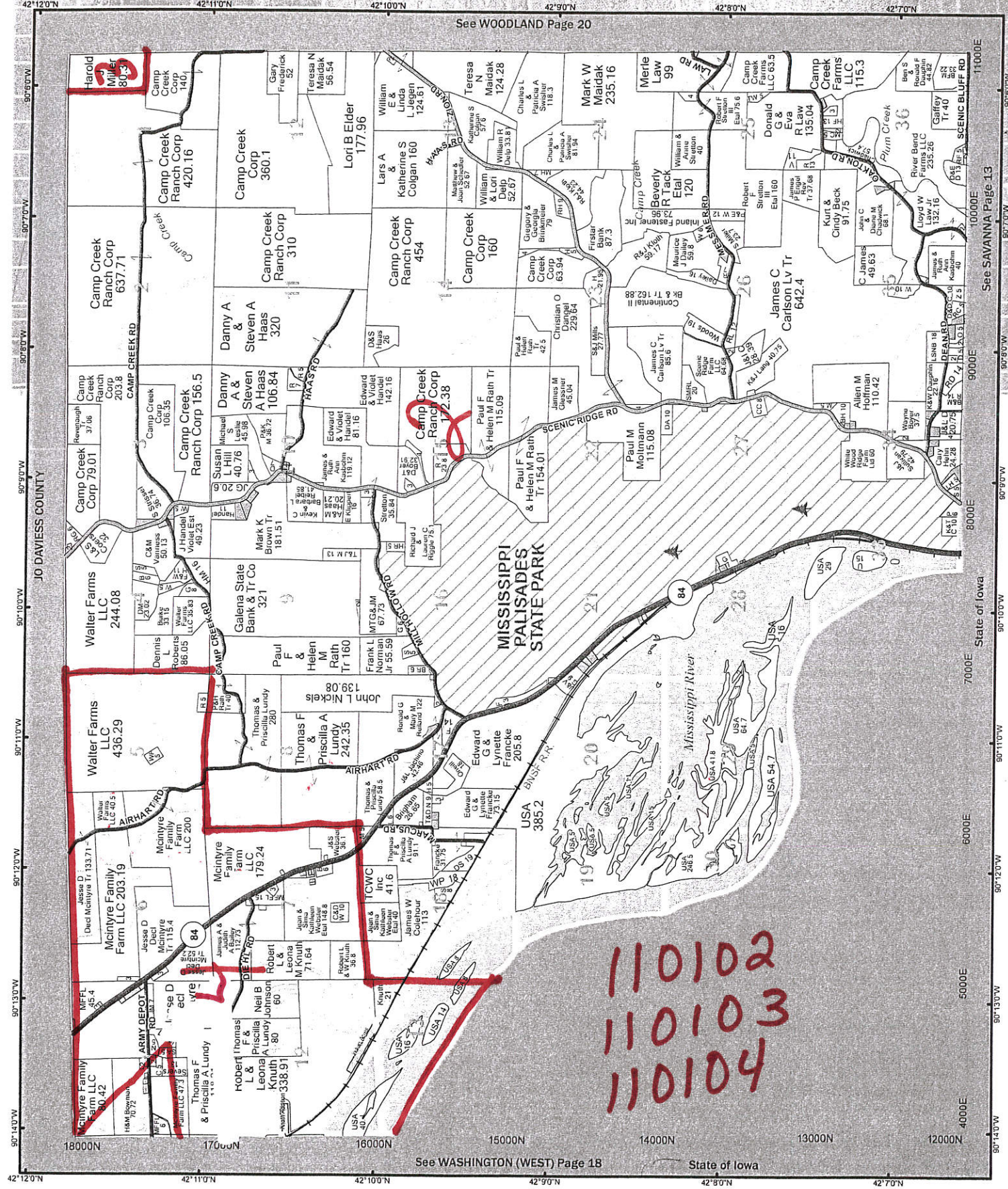
# WASHINGTON (EAST)

1101

T.25N. - R.3E.



Copyright © 2011 Carroll County

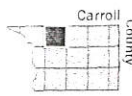


See WOODLAND Page 20

See SAVANNA Page 13

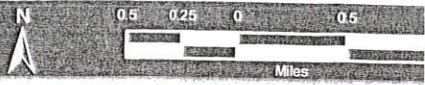
See WASHINGTON (WEST) Page 18

110102  
110103  
110104

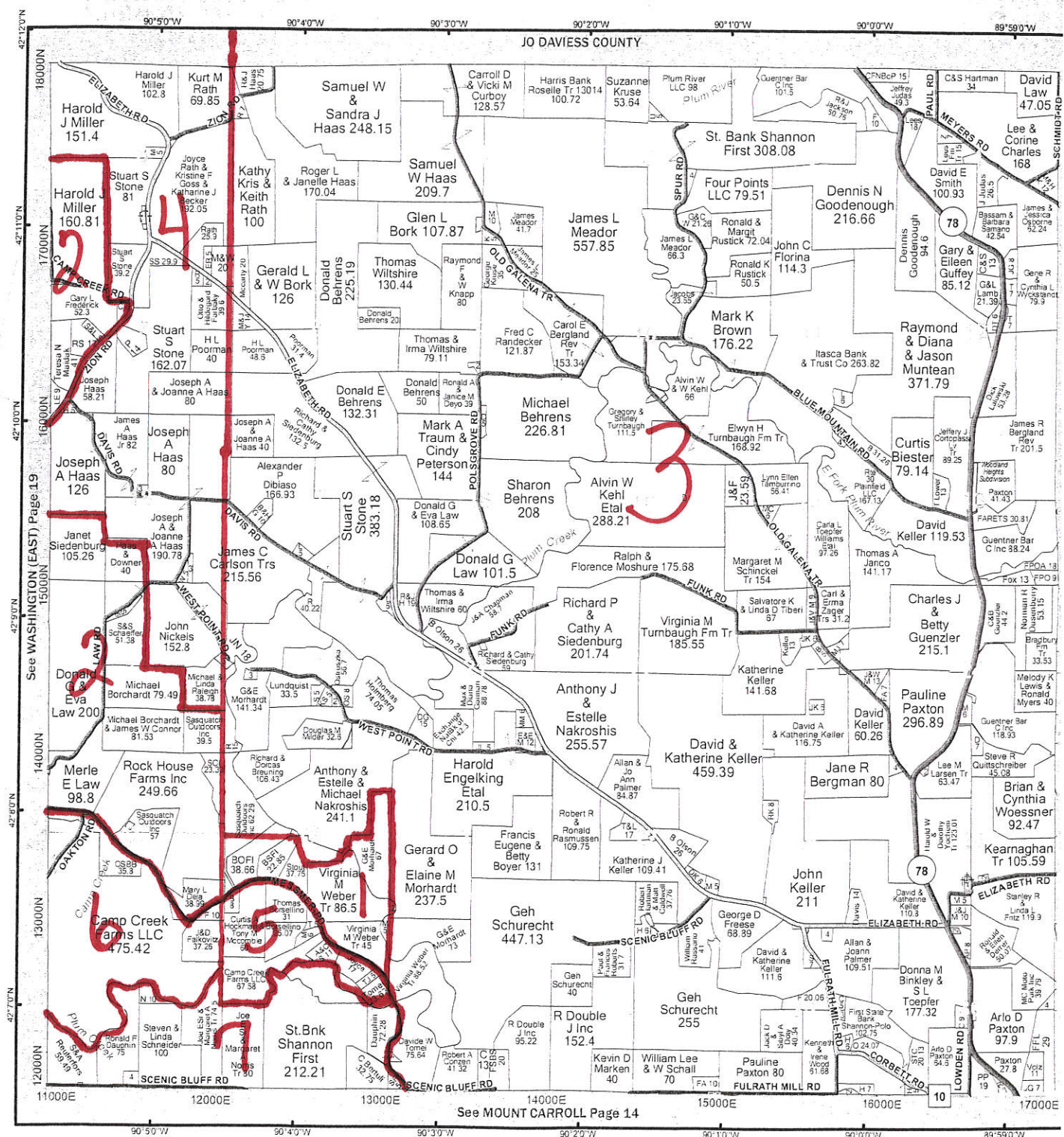


# WOODLAND 1201

T.25N. - R.4E.



Copyright © 2011 Carroll Co



- 120101
- 120102
- 120103
- 120104
- 120105
- 120106
- 120107

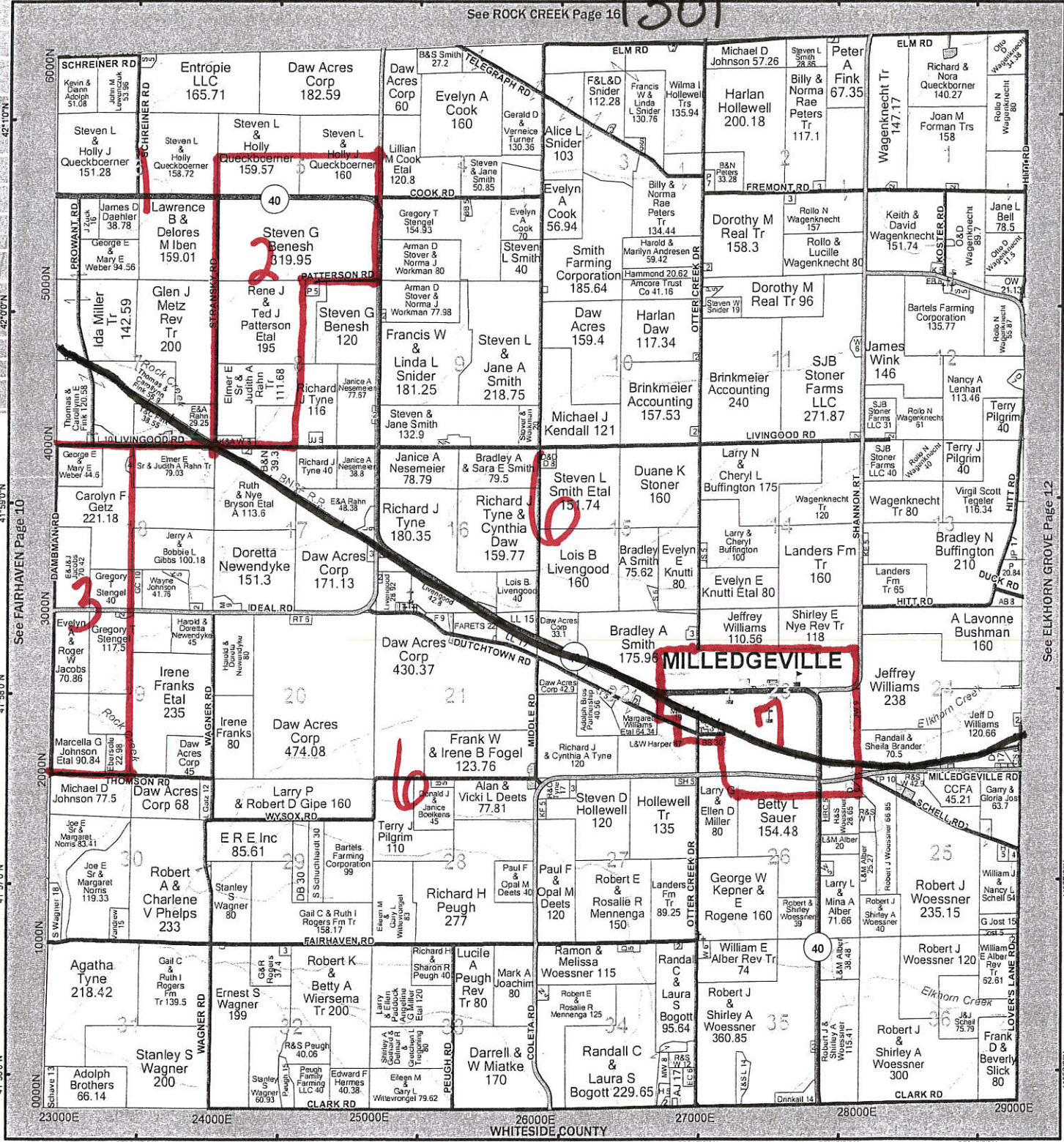


WYSOX 1-1301  
WYSOX 2-1302

T.23N. - R.6E.

89°51'0"W 89°50'0"W 89°49'0"W 89°48'0"W 89°47'0"W 89°46'0"W 89°45'0"W

See ROCK CREEK Page 16 1301



WHITESIDE COUNTY

23000E 24000E 25000E 26000E 27000E 28000E 29000E  
89°51'0"W 89°50'0"W 89°49'0"W 89°48'0"W 89°47'0"W 89°46'0"W 89°45'0"W

130101  
130102  
130106  
130107

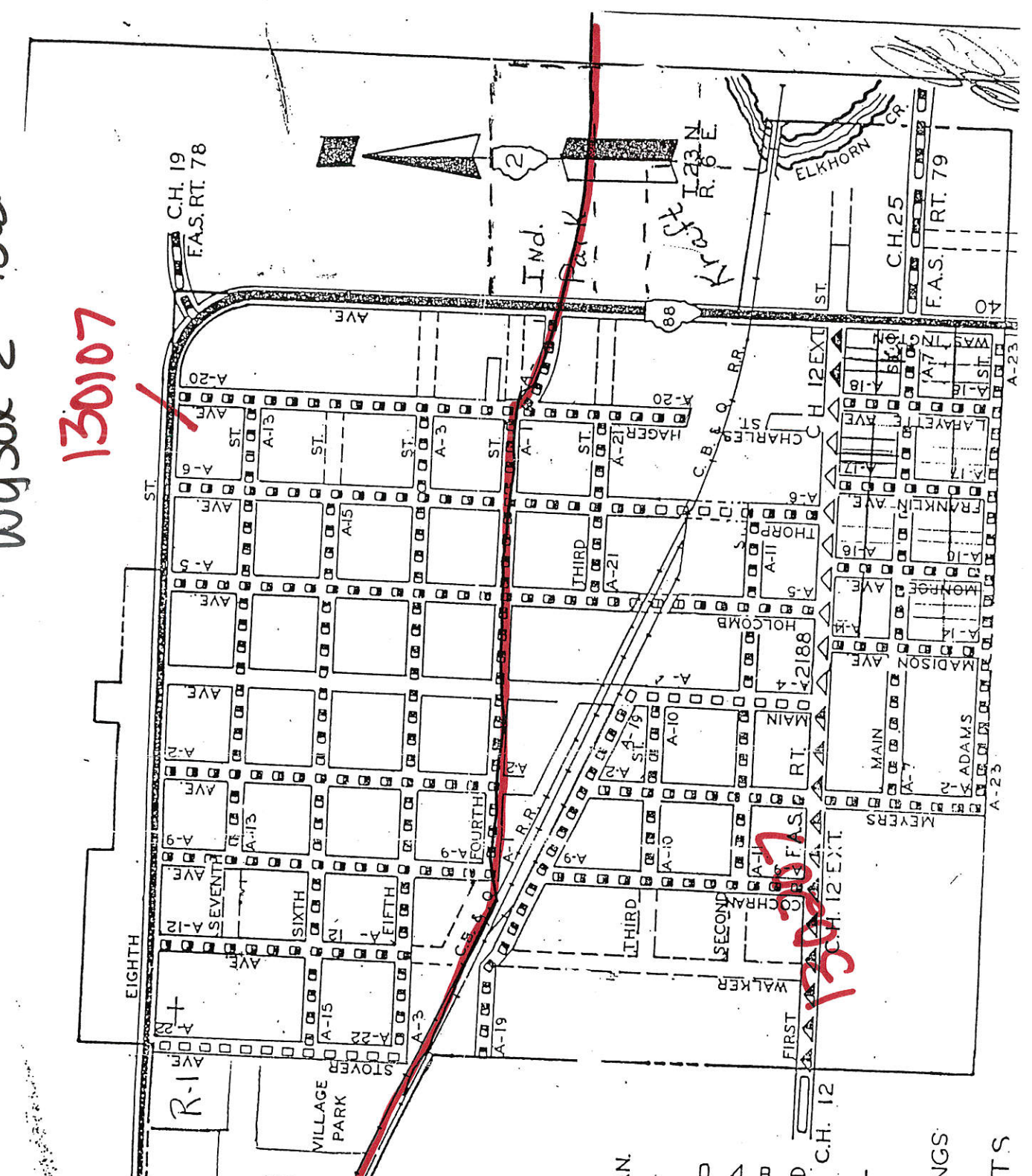
1302

130201  
130203  
130206  
130207

Milledgeville

Wysox 1 - 1301  
Wysox 2 - 1302

130107



- IND
- PAVT. BIT. GRAN.
- RAILROAD
- WATER
- WOOD
- BRICK
- CONCRETE
- GLASS
- IRON
- STEEL
- LEAD
- ZINC
- COPPER
- ALUMINUM
- SILICA
- CLAY
- CEMENT
- ASPHALT
- PAVEMENT
- ROADS & BUILDINGS
- HIGHWAYS
- ROADS & STREETS

130107

C.H. 19  
F.A.S. RT. 78

C.H. 25  
F.A.S. RT. 79

C.H. 12  
C.H. 12 EXT.

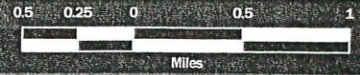
C.H. 12  
C.H. 12 EXT.



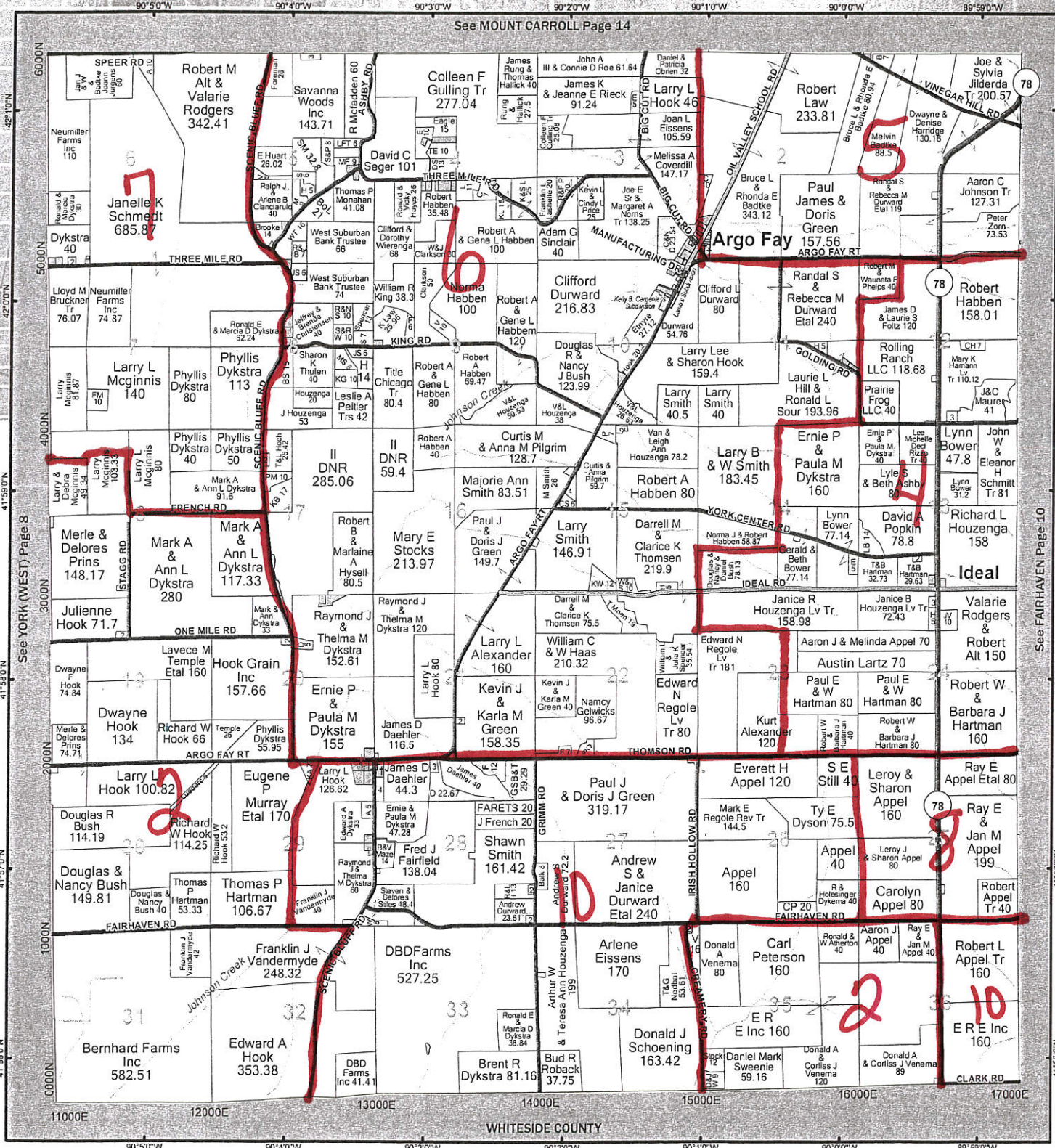
# YORK (EAST)

T.23N. - R.4E.

1401



Copyright © 2011 Carroll County



140102  
140104  
140105

140106  
140107  
140108

140110